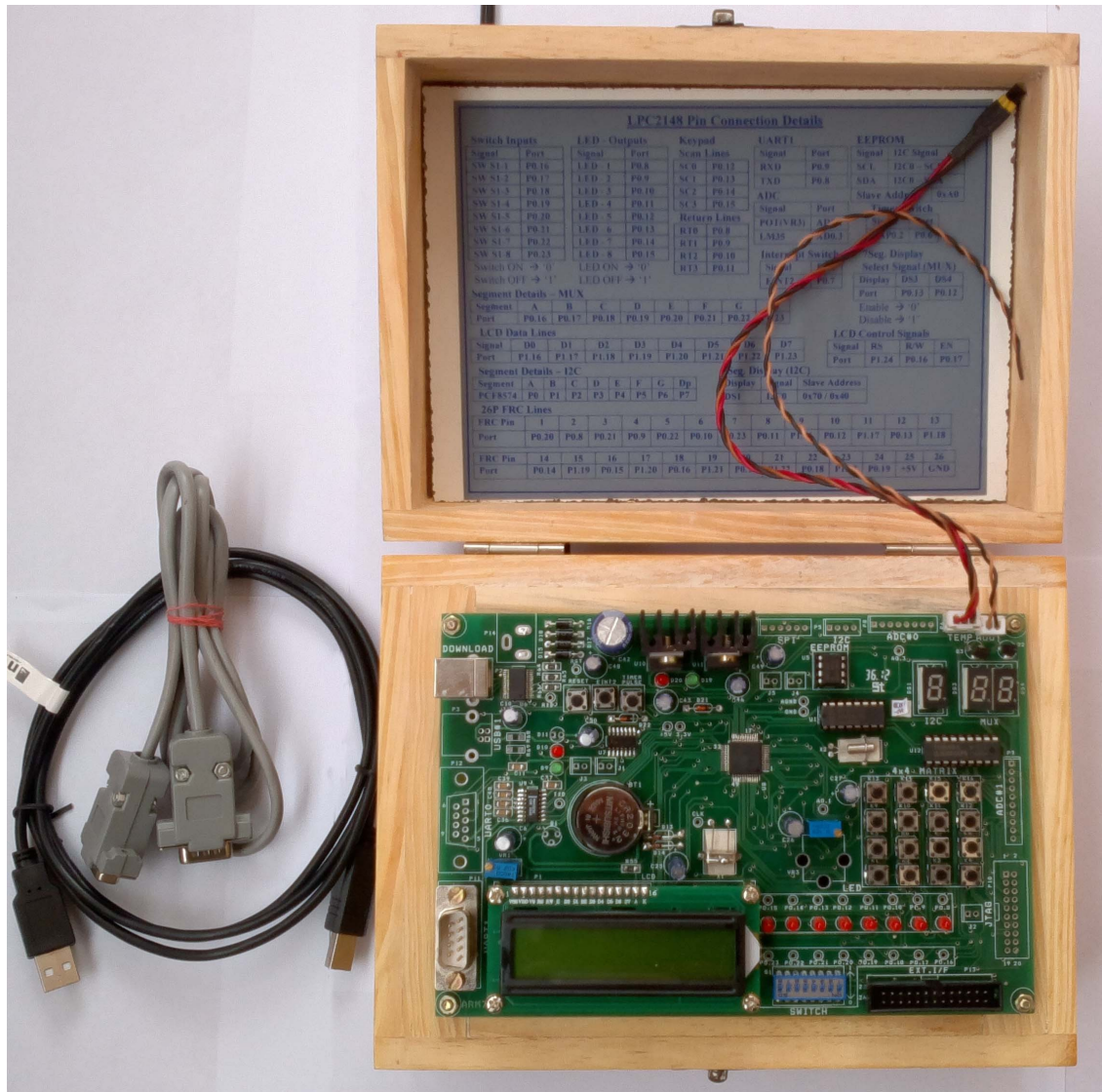


# ARM7 Trainer / Development Kit

## LPC2148 TRAINER KIT

**Model: EDU2148**

EDU2148 Trainer kit is suitable for the beginners to learn about ARM7 family architecture and helps to start their own application. The Board is designed with NXP LPC2148 microcontroller and has unique features to ease your learning and accelerates your development.



### Features

- ❖ **NXP LPC2148** microcontroller with 512 KB Flash Program memory 32+8KB SRAM
- ❖ 12Mhz crystal, clock can be multiplied by CPU-PLL to 60Mhz.
- ❖ On-chip two 10 bit ADC capable of providing 14 analog input channels
- ❖ On-chip USB 2.0 Port
- ❖ **On-Board USB to UART** bridge connected to CPU-UART0 for ISP
- ❖ **No confusing Jumper Selections**
- ❖ UART1 terminated at standard 9pin D type connector
- ❖ 8 LEDs connected to Port lines
- ❖ One 8 way DIP Switch to set input (connected to Port lines)

## ARM7 Trainer / Development Kit

- ❖ 4X4 Matrix Keypad
- ❖ One 16X2 Alpha-numeric LCD
- ❖ One Potentiometer to set the analog input to ADC
- ❖ One 16Kbits Serial EEPROM (I2C Interface)
- ❖ Single digit 7segment display connected to CPU – I2C port
- ❖ Two digit 7 Segment display connected to CPU IO Port (Multiplexed)
- ❖ CPU - RTC Crystal 32.768Khz with battery backup
- ❖ **One Temperature sensor connected to ADC channel**
- ❖ On-chip DAC terminated in connector for easy access
- ❖ Port lines terminated in 26pin FRC for external interface boards
- ❖ Standard JTAG port for emulator / programming
- ❖ Built-in Power Supply

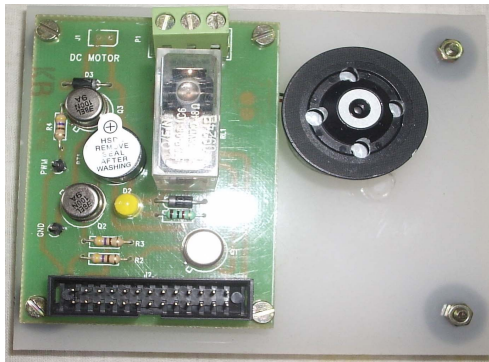
### Standard Accessories Included

One USB Downloading Cable  
One RS232C Interface Cable  
User Manual  
Example Program in CD-ROM

## Interface Boards

### Relay Buzzer & DC Motor Board

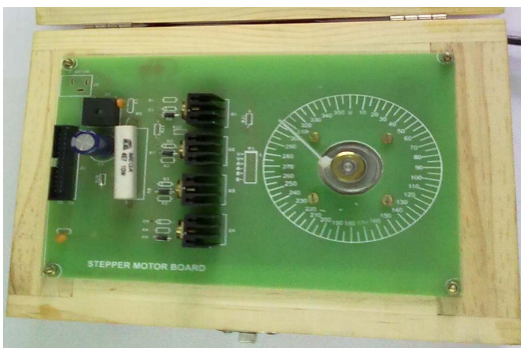
**Model: RBDIF**



- ◆ One 5A SPDT Relay with Driver circuit
- ◆ One 5V Buzzer with transistor driver
- ◆ One tiny PM DC motor with Driver circuit
- ◆ No External Power is required, Power taken from kit
- ◆ One FRC Interface cable

### Stepper Motor Driver Board with Stepper Motor

**Model: SMDIF**

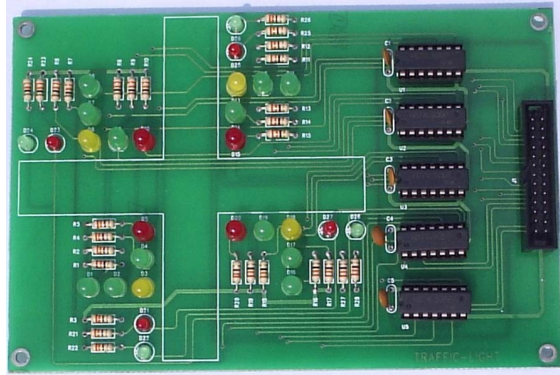


- ◆ One 1KG Stepper motor
- ◆ Driver circuit capable of driving 1Amps / Phase
- ◆ Simple Dial provided in PCB to measure step angle
- ◆ Built-in Power Supply
- ◆ Fixed in Wooden Enclosure
- ◆ One FRC Interface cable

## ARM7 Trainer / Development Kit

### Traffic Light Control Board

**Model: TLCIF**



- ◆ LEDs to simulate Traffic Lights
- ◆ Simulates Traffic control of 4 way Junction road
- ◆ No External Power is required, Power taken from kit
- ◆ All input signals are buffered
- ◆ One FRC Interface cable

### Graphic LCD Board

**Model: GLCDIF**



- ◆ Resolution: 128 x 64 Pixels
- ◆ View Area: 72 x 40 mm
- ◆ With Back Light
- ◆ No External Power is required, Power taken from kit



**SOLO AUTOMATIONS**

*Solution Of Leaders Obstacle*

“M.R.ILLAM”, 1<sup>st</sup> Floor, 22A, Kamaraj Avenue,

Sri Devi Garden Road, Valasaravakkam,

Chennai – 600087. **Mobile: 9840463751**

**Email: soloautomations@rediffmail.com**